

LITTER IN OUR WATERWAYS

Marine litter poses a vast and growing threat to the marine and coastal environment.

8 MILLION

items of litter enter the marine environment every day.



70%

of marine litter ends up on the sea bed, 15 per cent on beaches and the remaining floats to the surface.

7 billion

tonnes of plastic litter enter the ocean every year



When you throw something, where does it go?

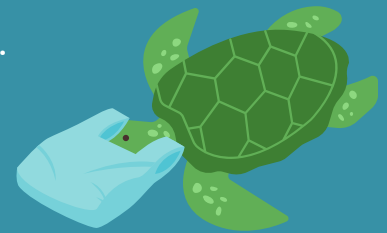
It is estimated

3X as much rubbish

is dumped into the world's oceans annually as the weight of fish caught

Researchers found **1/3** of turtles

studied in the eastern areas of Moreton Bay, Queensland had eaten discarded plastic.



At least **77** species of marine wildlife found in Australian waters

267 marine species worldwide, are affected by entanglement in or ingestion of marine debris

Sources:

- Marine Litter – An Analytical Overview – UNEP 2005
- Australian Marine Conservation Society
- GhostNets Australia
- Earthwatch: Dr Kathy Townsend



@KABNAHQ



keepaustraliabeautiful