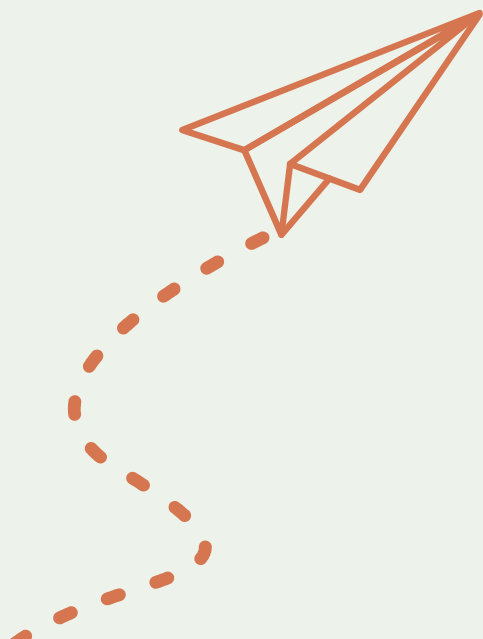




**TIDY TOWNS**  
SUSTAINABILITY AWARDS

---

# 2024 AWARDS BOOKLET



Keep   
Australia  
Beautiful

# WELCOME TO THE 2024 NATIONAL TIDY TOWNS AWARDS WINNERS BOOKLET!

For over 50 years, the Tidy Towns Awards have celebrated the remarkable efforts of communities across Australia in fostering sustainability, resilience, and beauty. From grassroots initiatives to national recognition, these awards embody the spirit of community pride and action.

In its 56th year, Keep Australia Beautiful continues to honour councils, organisations, and individuals dedicated to creating a more sustainable, resilient and beautiful Australia. The awards showcase innovative projects spanning litter reduction, waste management, cultural preservation, education, and more, empowering communities and promoting resilience.

But what truly defines a National Tidy Town? It's more than just cleanliness – it's about holistic sustainability. The awards recognise achievements across eight categories, emphasising harmony between economic, social, and environmental needs. Winning initiatives are innovative, inclusive, and effective, embodying the essence of sustainability.

As we celebrate your achievements, let's also embrace the opportunity to learn from one another, fostering a community of inspiration and growth. Together, we can continue to build a more sustainable, resilient, and beautiful Australia.

**Congratulations to all our winners!**



# A MESSAGE FROM OUR CEO

Welcome to the 2024 Keep Australia Beautiful Tidy Towns Sustainability Awards Booklet. It is with immense pride that I present the finalist projects and towns that are paving the way for a more sustainable, resilient and beautiful Australia.

This year's awards have been a testament to the power of community and innovation. To the entrants, your dedication to environmental excellence is truly inspirational. Your stories remind us that change begins at the local level and that every effort matters. To our valued partners, your unwavering support has been instrumental in the success of this program. The dedication of our staff and the expertise of our judges have also been invaluable in ensuring a fair, rigorous, and enjoyable process for all involved.

Within these pages, you'll discover the outstanding projects and initiatives that have earned recognition as finalists. These stories are not just about achievements; they are about shaping a more sustainable future. Thank you for your commitment to sustainability, your hard work, and your dedication to keeping Australia beautiful.

Together, we set an example, showing that sustainability is not just a concept but a way of life.

With gratitude,

**Olivia Lynch**  
CEO  
Keep Australia Beautiful National Association





## **ACKNOWLEDGEMENT OF COUNTRY**

Keep Australia Beautiful Victoria acknowledges the Traditional Custodians of the places where we live and work and honours the deep cultural, social, environmental, spiritual and economic connection they share with their lands and waters.

## ABOUT THIS BOOKLET:

This book provides in-depth context and background information on all our 2023 state winner who are now the 2024 National finalists. Each town is showcasing their sustainable efforts and insights into the vibrant happenings within their respective communities. We invite you to personally explore the richness of experiences unfolding in our remarkable country. Rest assured, you'll be greeted in these locales with warm embraces and friendly smiles.

**Keep Australia Beautiful gratefully acknowledges the following organisations for supporting the 2024 Tidy Towns – Sustainability Awards:**



# BEHAVIOUR CHANGE CAMPAIGN & EDUCATION



# BEHAVIOUR CHANGE CAMPAIGN & EDUCATION SHORTLISTED ENTRANTS

WINNER

## Bee School by Beechworth Honey

**BEECHWORTH, VIC**

Bee School by Beechworth Honey offers an immersive educational platform focusing on bees, pollination, sustainability, and biodiversity. Tailored for schools and groups, Bee School provides enriching learning experiences suitable for all ages and abilities. From hands-on hive explorations to discussions on food security, Bee School aims to raise awareness about the critical role of bees in our ecosystem. Led by qualified educators, sessions are aligned with Australian and Victorian curricula, ensuring educational relevance. With a vision to educate 18,000 students annually, Bee School seeks partnerships with organisations like the Wheen Bee Foundation to expand its impact. The program aims to inspire students to support pollinators and make environmentally conscious choices. Positive feedback from teachers highlights increased student engagement and understanding of pollination and biodiversity. By instilling a love for bees and the environment, Bee School aims to empower future generations to advocate for biodiversity and food security, thereby leaving a positive legacy for generations to come.



---

## Gnalla Wangkiny Park

**PINGELLY, WA**

The Gnalla Wangkiny Park, affectionately known as the Pingelly Pocket Park, stands proudly along Main Street, embodying community spirit, diversity, and inclusivity. It's transformed from a neglected space into a vibrant hub through collective efforts. With enhanced safety measures like CCTV, it offers a yarning circle and fire pit, inviting dialogue and connection among residents. Named Gnalla Wangkiny to honour Aboriginal heritage, it hosts diverse events, fostering unity and understanding. Adorned with custom fencing and interactive features, it's not just a park but a symbol of Pingelly's values—community, culture, and inclusivity.



# BEHAVIOUR CHANGE CAMPAIGN & EDUCATION SHORTLISTED ENTRANTS

## Hermannsburg Behavioural Change and Education Campaign Project

### NTARIA (HERMANNSBURG), NT

Hermannsburg thrives as a sustainable community through robust behaviour change campaigns and educational programs. Rooted in the belief that knowledge drives meaningful change, Hermannsburg launches impactful campaigns to shift mindsets and cultivate a deep commitment to sustainability. Central to these efforts is the "Rent-a-Rake" initiative, engaging residents in keeping yards litter-free, fostering personal responsibility, and enhancing community aesthetics. Additionally, the *Push Bike Workshop* empowers children with bike repair skills, promoting sustainable transportation and skill-building. Artistic engagements like *Paint a Planter* and *Bin Stickers* infuse creativity into environmental initiatives, beautifying spaces and promoting responsible consumption. The *Many Murals* project transforms community areas into visually appealing spaces, fostering gatherings and community pride. Through social media, workshops, and community meetings, Hermannsburg disseminates knowledge on waste reduction and water conservation. These holistic efforts position Hermannsburg as a model for sustainable communities.



## Water – Let's Make It Last!

### BATHURST, NSW

Bathurst Regional Council's *Water – Let's Make It Last!* program embodies a holistic approach to water conservation, driven by community empowerment and sustained behavioural change. Through integrated communication, engagement, education, and compliance efforts, the program has significantly reduced water consumption, even amidst droughts and population growth. By fostering collaboration and utilising diverse communication channels, the program has instilled a sense of responsibility and resilience within the community. Notably, the project has led to a remarkable 42% decrease in residential water consumption since its inception in 2019, showcasing the community's commitment to sustainability. Moreover, the program has facilitated increased uptake of safe greywater usage, widespread participation in water efficiency initiatives, and the installation of smart meters to identify leaks. Beyond water conservation, the project has fostered partnerships, built community capacity, and laid the groundwork for future behaviour change initiatives across various environmental priorities. Its legacy extends beyond water conservation, leaving a lasting impact on community awareness and engagement.





# WASTE PREVENTION & REDUCTION



# WASTE PREVENTION & REDUCTION SHORTLISTED ENTRANTS

## WINNER

### **Bin to Win (Centacare Evolve Housing & Brighton Council)**

#### **BRIDGEWATER, TAS**

Centacare Evolve Housing partners with Brighton Council to host the annual Bin to Win' event, promoting waste education and accessibility. The event offers interactive education and ensures minimal waste goes to landfill. Together, the community removes over 80 carloads of waste, 200+ tyres, 50+ white goods, and 40+ mattresses. This initiative reflects Centacare Evolve Housing's dedication to sustainability and empowering its housing community.



### **Quercus Beechworth Neighbourhood House**

#### **BEECHWORTH, VIC**

Quercus Garden and Grow Free Stand offer 24/7 access to fresh and packaged food for community members. The garden's produce is used for frozen community meals and available for home use. Increased demand has led to expanded food production, with community contributions to Grow Free. Foodshare supplies the stand and kitchen weekly, and all packaging is recycled. Reusable bags are provided, reducing waste. Perishables are stored in fridge freezers, and leftovers are composted or used to feed chickens. Quercus has restored the garden's productivity, aided by improved soil and watering systems. The program extends to the *Grow Free Stand*, fostering community resilience and sharing resources. The initiative reduces food waste, supports local growers, and promotes sustainability. Quercus actively engages the community, empowering them to lead and shape a sustainable future.



# WASTE PREVENTION & REDUCTION

## SHORTLISTED ENTRANTS

### Pingelly Primary School Recycle

#### PINGELLY, WA

Pingelly Primary School is more than just a place of learning; it's a sanctuary for nearly a hundred children. The Pingelly P&C Association, school administration, and students collaborated on a heartfelt mission: to build a Nature Playground from recycled materials and local rocks. Sustainability and community engagement are central to this initiative, with students leading recycling efforts and weekly competitions to collect 10-cent containers. Dedicated *Litter Marshalls* ensure the playground stays pristine, aided by *Containers for Change* recycling bins. Local businesses join in, organising collection drives. Repurposing materials from local farmlands not only reduces costs but fosters community pride. Through various fundraising efforts, including donations and community initiatives, over \$10,000 has been raised for the Nature Playground. This project embodies unity, resilience, and empowerment, symbolising hope and possibility for Pingelly Primary School. As construction progresses, the spirit of collaboration and environmental stewardship flourishes, bringing the school closer to its vision of a vibrant, inclusive, and sustainable learning environment.



### Hermannsburg Waste Prevention and Recovery

#### NTARIA (HERMANNSBURG), (Hermannsburg), NT

Hermannsburg's Waste Management Facility (WMF) has undergone transformative changes, reflecting its commitment to sustainable practices. The *Litter Prevention* program strategically places bins and implements litter locks and fencing to combat littering, creating a cleaner environment. Creative initiatives like the *Paint a Planter* project and *Many Murals* project not only enhance aesthetics but also promote biodiversity and raise awareness about waste reduction. These efforts showcase Hermannsburg's dedication to responsible consumption, sustainable communities, and biodiversity conservation, serving as a model for waste reduction aligned with global sustainability goals.



# WASTE PREVENTION & REDUCTION SHORTLISTED ENTRANTS

## Waste 2 Art

### *BATHURST, NSW*

Waste 2 Art, a community competition and exhibition, celebrates creativity through the reuse and recycling of waste, educating and challenging perceptions about waste issues. Sponsored by NetWaste, Bathurst Regional Council fully funds its local program, engaging participants of all ages and abilities. With categories spanning from Pre School to Open, and themes set annually, the competition fosters innovation and sustainability. Judges award prizes for creativity and adherence to the waste theme, promoting responsible consumption and production. The communication plan ensures broad dissemination of information, promoting sustainable resource use. Free craft workshops engage schools and the community, reinforcing the reduce, reuse & recycle ethos. Waste 2 Art, running for 14 years, reaches diverse audiences, spurring conversations on waste management. The program's success lies in its ability to inspire creative expression while fostering community engagement and education on waste issues.



# COMMUNITY HEALTH & WELLBEING



# COMMUNITY HEALTH & WELLBEING

## SHORTLISTED ENTRANTS

WINNER

### **Pingelly Somerset Alliance**

#### **PINGELLY, WA**

In November 2022, the Home Care Support Service (HCSS) initiative emerged from a collaboration between Pingelly Somerset Alliance Inc, Pingelly CRC, Incasa Country, and Mabel, revolutionising elderly care in rural communities. This visionary project, driven by the Alliance's commitment to elderly independence, has transformed lives and strengthened community bonds. Through essential services funded by home care packages, seniors can age in their homes, preserving dignity and connections. The Alliance's dedication led to the creation of eight jobs and successful expos, engaging 138 participants from 30 communities. *The Virtual Village*, spanning Wickepin, Wandering, and Pingelly, unites 180 members, fostering support and camaraderie. This pioneering initiative's impact extends nationally, with 19 communities adopting similar models. By prioritising independence, community involvement, and tailored care, the Pingelly Somerset Alliance Inc sets a profound example of empowering rural communities and enhancing seniors' well-being. Through collaborative efforts and innovative approaches, they've redefined elderly care paradigms, leaving a lasting legacy of inclusivity and support.



### **Drag'd Out Beechworth Inc.**

#### **BEECHWORTH, VIC**

The Drag'd Out festival in Beechworth holds a special place for the LGBTQIA+ community and allies, offering a vibrant celebration of drag artistry and inclusivity. With a mission to unite people from diverse backgrounds, the festival spans four days, featuring a rich lineup of entertainment, educational booths, and family-friendly activities. Organised by local residents, the festival promotes cultural safety and accessibility, ensuring a welcoming environment for all attendees. It serves as a platform for important conversations around LGBTQIA+ acceptance and inclusion, fostering connections and understanding within the community. The event's success demonstrates Beechworth's progressive spirit and commitment to diversity. Through entertainment and public displays of acceptance, the festival sparks dialogue, promotes well-being, and paves the way for a more inclusive society. With overwhelming support from locals and stakeholders, Drag'd Out Beechworth Festival stands as a beacon of unity and celebration, leaving a lasting legacy of acceptance and belonging for LGBTQIA+ individuals and their allies.



# COMMUNITY HEALTH & WELLBEING SHORTLISTED ENTRANTS

## Brighton Community Food Hub

### BRIDGEWATER, TAS

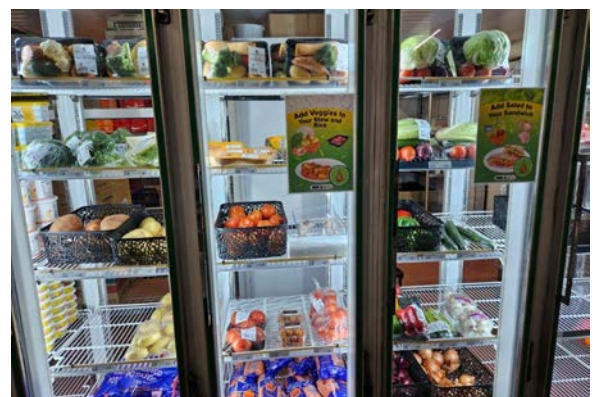
The Brighton Community Food Hub Inc. is a grassroots initiative driven by the mission to provide affordable food and support to individuals and families facing financial hardship in the Brighton area. As a non-profit, volunteer-run association, inclusivity and community empowerment are at the core of their operations. They strive to alleviate food insecurity, which affects over half of Tasmanian households, by offering a range of affordable food items sourced from various suppliers. Since its establishment in 2022, they have garnered recognition for their contributions to the community, including awards such as the *Volunteer of the Year* and *Community Event of the Year*. With the support of dedicated volunteers and partnerships with organisations like Food Bank Tasmania, they have seen a significant increase in demand for their services, serving approximately 700 people at each food hub event. Beyond food distribution, they actively engage with the community through initiatives like breakfast programs for schools and donations to local shelters and fire brigades. Their success lies in the commitment of their volunteers, strong leadership, and adherence to their core values of inclusivity and community support.



## Hermannsburg Community Health and Wellbeing Project

### NTARIA (HERMANNSBURG), NT

Hermannsburg's dedication to community health and well-being goes beyond physical fitness, embracing social, mental, and environmental aspects. Through initiatives like the *Healthy Stores* project, they promote nutritious choices and balanced diets. Water conservation efforts educate on responsible usage and integrate innovative technologies like the Groasis Waterboxx. Solar lights in parks enhance safety and conserve energy, while LED technology adoption underscores responsible consumption. Bush trips foster youth connection with cultural heritage and land, promoting mental well-being, and programs like *Secret Life of Remote Dogs* instils compassion and responsibility. Events like the *Colour Run* and *Bush Wok Cooking Competition* encourage physical activity and nutrition. The Tjuwanpa Outstation Resource Centre empowers residents with employment skills, fostering community development. Overall, Hermannsburg's initiatives epitomise a comprehensive approach to community wellness, setting a benchmark for sustainability and health promotion.



# COMMUNITY HEALTH & WELLBEING

## SHORTLISTED ENTRANTS

### **Bathurst Community Conservation Volunteer Program**

#### ***BATHURST, NSW***

Established in 2015 under the Bathurst Region Vegetation Management Plan (BRVMP), Bathurst Regional Council operates a robust environmental conservation volunteer program. Aimed at fostering community awareness of environmental conservation and habitat rehabilitation, the program organises community planting days, revegetation maintenance sessions, and school planting days. Volunteers engage in habitat restoration across seven Council reserves, planting trees and maintaining revegetation sites. These efforts not only contribute to physical fitness and community bonding but also enhance cultural identity and biodiversity protection. The program aligns with educational syllabuses, fostering environmental stewardship among students. Through partnerships with various stakeholders, including government bodies, schools, and local suppliers, the program has successfully planted thousands of trees, revitalising degraded land and waterways. It promotes community involvement, ecological restoration, and knowledge exchange, exemplifying the council's commitment to sustainable environmental management.





# HERITAGE & CULTURE



# HERITAGE & CULTURE

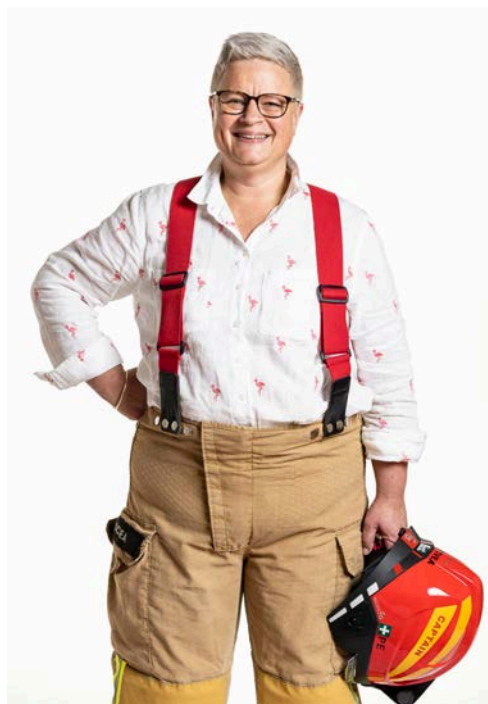
## SHORTLISTED ENTRANTS

WINNER

### **The People of Beechworth Exhibition by Burke Museum**

**BEECHWORTH, VIC**

A collaborative effort between the Burke Museum and the local community, serving as a beacon of resilience and connection in the face of adversity. Following the challenges of bushfires and the COVID-19 pandemic, the project aimed to rebuild community spirit by celebrating the diverse stories of ten modern community members alongside the rich history of Beechworth. Through a complete museum refit and the integration of multimedia elements, visitors are offered an immersive and interactive experience, fostering a deeper connection to the town's heritage. The exhibition's modular layout ensures ongoing relevance and inclusivity, with stories and portraits regularly refreshed to reflect the evolving community. Embracing multiculturalism and Indigenous perspectives, the project highlights the town's vibrant tapestry of identities and experiences. By engaging visitors of all ages and backgrounds, the People of Beechworth exhibition not only educates but also inspires a sense of belonging and pride in shaping local history. Through innovative storytelling and interactive exploration, the project exemplifies the transformative power of museums in fostering cultural awareness and community connection.



### **Kutalayna Collective - Winter Fest**

**BRIDGEWATER, TAS**

Winterfest in Bridgewater, organised by the Kutalayna Collective, fills a void in winter celebrations while challenging stereotypes about the community. The event aims to create a unique, inclusive, and eco-friendly festival that celebrates culture and fosters community unity. By involving local services and breaking down barriers to engagement, Winterfest enhances community bonds and provides valuable resources. Throughout its implementation, Winterfest emphasises the importance of community collaboration and sustainability. Engaging locals in the planning process strengthens ownership and pride in the event, while sustainability measures reinforce the positive impact of eco-conscious practices. The results of Winterfest have been transformative, becoming a cherished tradition that fosters community pride and unity. Its legacy of empowerment and inclusivity reshapes perceptions of Bridgewater and leaves a positive impact on the cultural landscape. Winterfest's X-Factor lies in its unique blend of sustainability, inclusivity, and community engagement, setting it apart as a symbol of resilience and unity in the community.



# HERITAGE & CULTURE

## SHORTLISTED ENTRANTS

### **Pingelly Honouring History**

#### **PINGELLY, WA**

Pingelly Honouring History is a shining example of community-driven initiative, preserving and celebrating Pingelly's rich heritage. Over the past year, this project has showcased the dedication and collaborative spirit of its residents. The revitalisation of the town hall and courthouse, now housing the Pingelly Heritage and Museum Group, symbolises the town's vibrant history. Generous donations of historic vehicles and the RSL Collection further enrich the project, honouring Pingelly's military history. *Lost Pingelly*, an online platform, preserves the town's legacy for future generations, while *The People of Pingelly* shares personal stories, deepening visitors' connection to the past. The inaugural heritage festival attracted visitors from far and wide, fostering a sense of pride among residents. *The Pingelly Men's Shed* and collaboration with the Tourism Group have also played pivotal roles. Overall, *Pingelly Honouring History* showcases the community's commitment to preserving its cultural heritage for generations to come.



---

### **Hermannsburg Heritage and Culture**

#### **NTARIA (HERMANNSBURG), NT**

Hermannsburg, rooted in the Western Arrernte people's traditional lands, is dedicated to preserving its cultural legacy. The Hermannsburg Historic Precinct, founded in 1877, stands as a testament to this commitment, showcasing the convergence of Western Arrernte and European cultures. Managed by the Hermannsburg Historical Society and Finke River Mission, it serves as a living archive and cultural hub. Restoration efforts, supported by government funding, have revitalised the precinct, enabling visitors to explore its rich history. Collaborative projects with indigenous communities emphasise cultural heritage management and knowledge transfer. Hermannsburg's holistic approach integrates biodiversity monitoring and environmental stewardship with cultural education initiatives, celebrating local languages and artists like Albert Namatjira. The preservation of Namatjira's house further embodies this dedication. Overall, Hermannsburg exemplifies how heritage preservation and sustainable land management can harmonise, offering a model for communities worldwide.



# HERITAGE & CULTURE

## SHORTLISTED ENTRANTS

### **River Connections – Knowing and caring for the Macquarie Wambuul River**

#### ***BATHURST, NSW***

River Connections bridges Bathurst's primary school students with the Macquarie Wambuul River, integrating Wiradyuri culture, science, and arts. A partnership with the Wiradyuri Traditional Owners fosters cultural education sessions, aligning with curriculum priorities. The ten-week program combines classroom and outdoor activities, culminating in *Big River Day*, engaging students in Wiradyuri traditions, ecological exploration, and mindfulness. The initiative, initiated in 2019, has reached seven schools and over 300 students. Participatory planning ensures authentic cultural experiences, benefiting from Wiradyuri Elders' wisdom. The program's X Factor lies in fostering genuine connections between schools and Elders, catalysing community engagement and educational empowerment. Positive feedback from students and teachers underscores its impact on cultural understanding and environmental stewardship. River Connections extends beyond education, envisioning cultural and environmental teachings embedded in the curriculum, safeguarding waterways and Indigenous heritage. Through experiential learning and respectful engagement, the program inspires a generation to honour and preserve Wiradyuri culture while caring for the land and its waters.



# LITTER PREVENTION



# LITTER PREVENTION SHORTLISTED ENTRANTS

## WINNER

### Banishing Bathurst Butts

#### BATHURST, NSW

In collaboration with Bathurst Base Hospital, Bathurst Regional Council launched a successful cigarette litter reduction project, slashing litter by 85% across hospital and suburban sites in 2023. The *Banishing Bathurst Butts Beyond the CBD* initiative builds upon the council's previous success in decreasing cigarette litter within the central business district. Despite challenges posed by smoke-free legislation and hospital policies, innovative strategies were devised, including improved infrastructure and educational signage compliant with regulations. Surveys and site investigations underscored the project's necessity, with initial litter checks revealing significant butt volumes. The project surpassed its objectives, increasing binning rates by 87.9% and achieving a 93.7% reduction in CBD litter. Partnering with stakeholders such as NSW EPA and NSW Health was pivotal in overcoming constraints and ensuring project success. Adaptive planning and innovative design were central to navigating legislative limitations, with resources now available for similar projects nationwide. This collaborative effort demonstrates the power of partnerships in addressing environmental challenges and underscores Bathurst's commitment to sustainability.



### Beechworth Boomerang Bags

#### BEECHWORTH, VIC

Beechworth Boomerang Bags exemplifies community resilience and compassion through its impactful initiatives. Amidst the aftermath of the 2020 bushfires and subsequent floods, volunteers tirelessly produced over 1,370 toiletry bags for those affected, spreading messages of encouragement and supplying essential items. Coordination was key, with bags swiftly distributed to various relief centres across affected regions. The grassroots effort not only provides practical assistance but also promotes sustainability and reduces waste. Boomerang Bags' total impact, including thousands of bags and other items made from landfill-bound materials, showcases a commitment to environmental stewardship and community support.



# LITTER PREVENTION SHORTLISTED ENTRANTS

## Kiya Djiripin Pingeculling (Hello Happy Pingelly)

### PINGELLY, WA

Kiya Djiripin Pingeculling is a testament to community collaboration and cultural celebration, led by the Shire of Pingelly. Integrating Aboriginal artwork into strategic waste receptacles, such as cigarette poles, not only deters littering but also honours indigenous heritage. Redesigned waste bins adorned with local artwork promote community pride and environmental stewardship, significantly reducing littering. This collaborative effort involves various stakeholders, fostering a deeper sense of connection and shared responsibility. The project's impact extends beyond waste management, fostering community pride, preserving local culture, and increasing environmental awareness. Kiya Djiripin Pingeculling exemplifies effective waste management intertwined with cultural respect, creating a cleaner, more vibrant Pingelly for generations to come.



---

## Hermannsburg Litter Award Projects

### NTARIA (HERMANSBURG, NT)

Hermannsburg demonstrates proactive measures in combating litter, establishing a model community where cleanliness and environmental consciousness thrive. Through initiatives like the *Adopt an Area* scheme, stakeholders take ownership of designated spaces, fostering a sense of responsibility and community cohesion. Innovative solutions such as litter locks on bins effectively mitigate litter spread, showcasing practical approaches to environmental challenges. Community engagement drives regular clean-up events, strengthening social bonds and enhancing cleanliness. Creative initiatives like *Bin Stickers* and the *Many Murals* project beautify the community while promoting waste management awareness. Hermannsburg's holistic approach underscores its dedication to creating a sustainable and visually appealing environment, contributing to the community's well-being and pride.



# ENVIRONMENTAL SUSTAINABILITY





# ENVIRONMENTAL SUSTAINABILITY SHORTLISTED ENTRANTS

## WINNER

### Hermannsburg Environmental Sustainability

#### *NTARIA (HERMANSBURG), NT*

Hermannsburg embarks on a profound journey towards environmental sustainability, rooted in a profound connection with nature and a steadfast commitment to preserving the region's unique ecosystem. The introduction of Groasis Waterboxx technology signifies a transformative leap in Hermannsburg's sustainability efforts, addressing arid land regeneration by providing a self-sustaining water supply for young plants. This innovative approach fosters biodiversity, restores habitats, and supports wildlife conservation. The commitment extends beyond individual projects, with initiatives like the *5000 Plants in 5 Years* initiative aiming to reintroduce native flora and combat desertification. Cultural heritage programs and strategic water conservation efforts further solidify Hermannsburg's position as a leader in sustainable land management, setting an inspiring example for environmental preservation worldwide. The collaboration with the Central Land Council and the Parks and Wildlife Commission of the Northern Territory underscores Hermannsburg's dedication to holistic ecosystem management, ensuring a harmonious relationship between the community and the natural world.



### Totally Renewable Beechworth

#### *BEECHWORTH, VIC*

Totally Renewable Beechworth, a dedicated volunteer community group, orchestrated the Home Energy Efficiency Expo with a vision to propel Beechworth towards 100% renewable energy and foster sustainability. Supported by grants from Indigo Shire Council and the Department of Energy, Environment, and Climate Action, TRB collaborated with Beechworth Urban Landcare and Indigo Power to host the event. Attended by 55 individuals, the expo aimed to educate the community on enhancing home energy efficiency to tackle rising energy costs and reduce greenhouse gas emissions. Keynote speakers, including Lucinda Flynn, Donald Mace, Tim Smith, and Jenny Indian, shared insights on practical strategies, ranging from draught sealing to passive design principles and tree planting. Participants gained valuable knowledge on cost-effective solutions and long-term investments to improve home comfort, minimise energy consumption, and contribute to environmental sustainability. Lucinda Flynn's engaging presentation emphasised the importance of individual action in reducing carbon emissions and fostering energy efficiency, empowering attendees to make meaningful changes in their homes.



# ENVIRONMENTAL SUSTAINABILITY SHORTLISTED ENTRANTS

## **Bridgewater Landcare Tasmania**

### **BRIDGEWATER, TAS**

The primary goals of the Bridgewater Foreshore Landcare Group revolve around rejuvenating the foreshore area through weed removal, revegetation efforts, species monitoring, and litter cleanup. Recognising the broader community benefits of Landcare, such as social engagement and improved well-being, the group emphasises the importance of strong partnerships for success. By establishing a dedicated core team, the focus has been on planting an essential understorey near the foreshore, enhancing habitat for local wildlife like bandicoots and birds. Shifting away from regular mowing to allow the understorey to flourish is a priority. The group's mission extends to engaging the local community in preserving and showcasing the area's natural beauty and recreational opportunities. Understanding the soil conditions and plant preferences informs their maintenance strategy, with a focus on maximising plant survival rates. The ultimate aspiration is to witness the complete restoration of the foreshore, fostering community pride and stewardship while curbing littering and antisocial behaviour. Collaborations with various community stakeholders, including Landcare Tasmania, local councils, indigenous groups, and educational institutions, highlight the project's growing impact and potential for future engagement.



## **Pingelly Environmental Sustainability Project**

### **PINGELLY, WA**

By harnessing alternative water sources and implementing innovative management strategies, the *Pingelly Community Water Scheme* reduces strain on potable water sources while enhancing community resilience. Central to this scheme is the Rennet Street swale, designed to collect and conduit water, creating a virtuous cycle that maximizes water usage efficiency. Through stormwater, bore water, and greywater utilisation, the project eliminates the need for potable water, safeguarding against shortages and enhancing community preparedness. The Pingelly Green Route intelligently connects key points within the community, promoting physical activity, reducing vehicular emissions, and fostering healthier lifestyles. Community-centric design and active engagement, including tree planting initiatives involving Pingelly Primary School children, strengthen community connections to nature and sustainability. By blending sustainable infrastructure development, water management, and community engagement, the project embodies a holistic vision of sustainability, enriching the community's well-being and cohesion.



# ENVIRONMENTAL SUSTAINABILITY SHORTLISTED ENTRANTS

## Building momentum to achieve Net Zero

### *BATHURST, NSW*

Bathurst Regional Council is making significant strides towards achieving Net Zero Emissions for its operations. Since 2020, the council has adopted a Climate Change Response Framework (CCRF), a Renewable Energy Action Plan (REAP), and an Emissions Reduction Plan (ERP), aiming to address its substantial energy consumption across various services and facilities. With emissions mainly stemming from the Bathurst Waste Management Centre, ERP targets were set for a 25% reduction by 2025, 60% by 2035, and Net Zero emissions by 2050. Early successes include surpassing REAP targets, with the council purchasing 100% renewable electricity since January 2023 and implementing energy-saving projects. Efforts to address landfill gas emissions are underway, with a new collection system expected to significantly reduce emissions. By transitioning away from fossil fuels, the council not only mitigates climate change but also improves air quality. The strategic approach outlined in the CCRF ensures continued progress towards a sustainable future for the Bathurst community.



# DAME PHYLLIS FROST



# DAME PHYLLIS FROST

## SHORTLISTED ENTRANTS

**WINNER**

### **Joselle Griffin** **(Australian Red Cross Tasmania)**

**BRIDGEWATER, TAS**

Joselle Griffin, a Bridgewater native, embodies community empowerment through participatory approaches rooted in her Tasmanian Aboriginal heritage. As a place-based worker at the Australian Red Cross Tasmania, she champions Asset Based Community Development, fostering grassroots initiatives like the Brighton Community Food Hub. Rejecting top-down methods, Joselle emphasises community-driven solutions, believing in the transformative power of local action. From her youth at Bridgewater High School to her role in crisis intervention and community development, Joselle's journey reflects a lifelong commitment to social justice and empowerment. Her work epitomises the belief that lasting change springs from within communities, making her a catalyst for positive transformation in Bridgewater and beyond.



### **Dr Pieter Mourik AM -** **Ring Trees and their links**

**BEECHWORTH, VIC**

Pieter Mourik is deeply involved in identifying and documenting Aboriginal Ring Trees, seeking official recognition and protection through legislation to safeguard this vital cultural heritage. Proposing the establishment of a formal register to locate and safeguard these trees, he emphasises the importance of educating local councils and communities to prevent accidental damage, especially during roadworks. As these ancient trees hold immense historical significance, particularly in northeast Victoria, his collaboration with the Dhudhuroa Waywurra Nations aims to register and preserve identified Ring Trees. Despite their importance, awareness about these trees remains low, risking the loss of invaluable historical landmarks. By documenting over 70 Ring Trees and collaborating with Indigenous communities, his efforts align with preserving Indigenous knowledge and heritage. Through public education and advocacy, Pieter strives to ensure the permanent protection of these remarkable cultural artifacts, leaving a legacy of awareness and preservation for future generations.



# DAME PHYLLIS FROST SHORTLISTED ENTRANTS

## Malcolm Jetta PINGELLY, WA

Malcolm Jetta, a proud Willman Noongar man, is more than a resident of Pingelly; he is its beacon of hope, devoted to empowering his community, preserving Indigenous heritage, and ensuring a sustainable legacy. As CEO of the Moorditj Youth Foundation Aboriginal Cooperation, Malcolm tirelessly uplifts young Aboriginal individuals through employment opportunities, counselling, and culturally enriching programs, including *back to country* camps fostering land connection and cultural pride. Beyond the foundation, Malcolm spearheads initiatives like the Arts & Culture Framework and the Pingelly Aboriginal Dance Group, promoting cultural awareness. His advocacy extends to breaking cycles of poverty and disadvantage, offering crucial support to families affected by substance abuse and youth entangled in the justice system. With his entrepreneurship, exemplified by the Somerset Catering Company, Malcolm champions economic development while celebrating Aboriginal culture. Guided by sustainability, Malcolm's holistic approach ensures prosperity without compromising the land or its people, embodying resilience and respect for Pingelly's heritage.



## Hermannsburg Dame Phyllis Frost Project

### NTARIA (HERMANSBURG), NT

The MacDonnell Regional Council (MRC) Civil Works Team spearheads Hermannsburg's sustainable evolution, championing environmental stewardship and community well-being through innovative projects. Their initiatives, like the adoption of Groasis Waterboxx technology, establishment of chilled water refill stations, and the ambitious *5000 Trees in 5* initiative, demonstrate a commitment to sustainability. The team's *Pollinator Highway* project underscores their dedication to biodiversity and ecological resilience, and recognises the interconnectedness of all living organisms. Through partnerships with stakeholders and integration of energy-efficient technologies, the Civil Works Team fosters community-driven sustainability efforts.



# DAME PHYLLIS FROST

## SHORTLISTED ENTRANTS

### **Geoff Windsor**

#### ***BATHURST, NSW***

Geoff Windsor, a Bathurst local with over 40 years of dedicated community service, has been nominated for his outstanding contributions to sustainability and environmental preservation. Geoff and his wife Judy established the Blue Wren Nursery over three decades ago, supplying the Bathurst Region with locally grown endemic plants for reforestation and landscaping projects. Their nursery has provided hundreds of thousands of native plants, crucial for ecological restoration and habitat enhancement. Geoff's extensive knowledge of botany and forestry, coupled with his commitment to community engagement, has made him an invaluable asset to numerous initiatives, including the Bathurst Community Climate Action Network (BCCAN). Despite being in his 80s, Geoff continues to propagate plants, attend farmers markets, and volunteer, leaving an indelible mark on Bathurst's environmental landscape and inspiring generations to come.



# YOUNG LEGEND





# YOUNG LEGEND SHORTLISTED ENTRANTS

## WINNER

### Indigo Future Proof Action Group

#### **BEECHWORTH, VIC**

The Indigo Future Proof Action Group, formed in 2023, comprises nine young people from across Indigo Shire, focused on enhancing youth preparedness for emergencies. Through training in emergency management and advocacy, the group aims to empower young agents of change. At the Spring Ditch event in March 2023, the group hosted activities fostering natural disaster awareness, like a *Spin the Wheel* trivia game. In December, they organised the all-ages music festival *Unite Indigo* to foster community cohesion, filling a gap in regional Victoria's music scene. Led by peer and youth workers, the group builds confidence and self-belief, nurturing event planning and organisational skills. With council support and funding, they amplify youth voices and create impactful projects. The group's autonomy in decision-making empowers them to address community needs, like creating resources for bushfire preparedness. Through collaborative efforts and tailored training, members develop skills and contribute to a more resilient and connected Indigo Shire community.



## HIGHLY COMMENDED

### Brighton Youth Action Group

#### **BRIDGEWATER, TAS**

The Brighton Youth Action Group (BYAG), established in 2023, prioritises the voices of young people aged 12-25, aiming to centralise youth perspectives in community initiatives. Recognising the need for youth-led change, BYAG organised the *Brighton Big Bangin Youth Night*, a rap concert and dialogue forum. This innovative event facilitated authentic discussions between youth, local authorities, and community leaders, addressing pertinent issues identified by young people. With over 200 attendees, the event served as a platform for youth expression and engagement. Co-designing initiatives with young people empowers them and fosters a sense of ownership, inspiring ongoing action and confidence in addressing community challenges. BYAG continues to spearhead efforts in empowering young people, focusing on issues like transport poverty, mental health, and food insecurity. Through inclusive and creative events, BYAG cultivates a culture of listening and celebration, amplifying youth voices and driving positive change in the Brighton community.



# YOUNG LEGEND SHORTLISTED ENTRANTS

## Dylan Cheney **PINGELLY, WA**

At just 15, Dylan Cheney embodies selflessness and dedication, standing as a beacon of hope in Pingelly. His altruistic nature shines through in his tireless efforts to support the elderly and less fortunate, offering comfort and aid whenever needed. As a member of the youth advisory committee, Dylan drives community initiatives, inspiring his peers to engage and take responsibility for their town's well-being. His commitment extends to environmental stewardship, with weekends spent caring for the Pingelly Cemetery and participating in clean-up drives. Dylan's leadership and compassion have not only improved well-being for residents but also empowered young people and promoted environmental consciousness. His exemplary conduct sets a standard for community service, inspiring others to follow his lead. Dylan's story serves as a testament to the power of individual action, leaving a lasting legacy of compassion and positive change in Pingelly.



## Hermannsburg Young Legends

### **NTARIA (HERMANSBURG), NT**

The Young Legends Campaign in Hermannsburg epitomises visionary youth-focused initiatives, aligning with UN SDGs. Children from the Hermannsburg School played a central role in the *Healthy Community Event*, showcasing their active participation and enthusiasm. Led by the Get Grubby team, they engaged in various health-centric activities, promoting messages of hygiene and sustainability. The event's success highlights the collaboration between educational institutions and community organisations, fostering community responsibility, health awareness, and environmental consciousness. Beyond the event, children took home seedling balls to grow, fostering environmental responsibility from an early age. Evaluation measures, including stakeholder engagement and ongoing involvement, ensure the campaign's effectiveness. Programs like the *Secret Life of Remote Dogs* and *Bush Trips* offer valuable educational experiences. The campaign, through its vibrant youth participation, paves the way for a healthier, more engaged, and empowered future, leaving a lasting legacy of well-being in Hermannsburg.



# YOUNG LEGEND SHORTLISTED ENTRANTS

## **Sustainable Scallywags**

### ***BATHURST, NSW***

Scallywags Long Day Care and Preschool in Bathurst Regional Council excels in early education, emphasising environmental sustainability and cultural heritage. Through initiatives like the Bush Kinder Program and outdoor learning activities, students develop a deep connection with nature. Sustainability practices such as recycling, composting, and gardening are integrated into daily routines, fostering environmental consciousness. Solar panel installations and collaboration with local pet shops demonstrate a commitment to renewable energy and waste reduction. Water conservation efforts and participation in council programs further reinforce sustainability education. Through partnerships and employment of early education trainees, Scallywags ensures continuity and excellence in its programs. Ultimately, the facility's legacy lies in preparing children for school while instilling values of environmental stewardship and cultural appreciation.





**TIDY TOWNS**  
SUSTAINABILITY AWARDS

---

Keep   
Australia  
Beautiful