

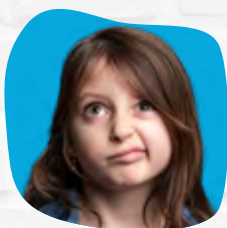
Paint 
Australia
Beautiful



SCHOOL MURAL COMPETITION & NATIONAL PEOPLE'S CHOICE AWARD

Primary schools around Australia are encouraged to submit their nature-based mural design to go in the running to win paint and supplies to make their masterpiece into a reality.

THINK



STEP 1: Brainstorm ideas with your school, grade or class and let your students put pencil to paper, designing a beautiful nature-inspired mural that incorporates native and local surrounds.

STEP 2: Submit your mural design with an explanation of how the mural reflects the natural environment, while capturing the school's sustainability initiatives or eco-vision to protect and improve local biodiversity to Keep Australia Beautiful! ²

STEP 3: Entries will be shortlisted by State for public voting. Shortlisted schools are encouraged to share their designs via social media to rally votes online. #PaintAustraliaBeautiful @Keep Australia Beautiful @keepaustraliabeautiful

STEP 4: A winning school from each state / territory will be awarded paint and supplies to turn the design into reality so they can recreate their mural designs on a selected wall within their school³.

STEP 5: Once completed, the State Finalist's murals will be unveiled and submitted for public voting on social media, where a National Winner will be crowned!

DESIGN



CREATE



KEY DATES¹

Submissions Close
End of Term 1 Holidays

Shortlist Finalists Announced
Start of Term 2

Public Voting Opens
Early Term 2

Winners Announced
Early Term 2

Murals completed by
End Term 3

Public Voting
for National People's
Choice
Award - Start Term 4

1. Specific competition dates listed on Paint Australia Beautiful website

1 You can submit one mural per school, or multiple murals from different classes or grades. There is no limit on the number of murals your school submits, however each mural requires an individual submission form, and must: (a) reflect your local environment and biodiversity, and (b) incorporate an eco-vision with sustainability initiatives.

2 To be eligible, school walls must be: (a) an exterior wall, fence, shed, shipping container etc (b) fully visible without obscurity (c) between 9-24m² surface (d) have a paintable surface e.g. brick, concrete, timber, steel, colorbond etc.

kab.org.au/paint-australia-beautiful

Keep 
Australia
Beautiful™